

A PAPUAN SORCERY TUBE.

BY

W. W. THORPE, Ethnologist, Australian Museum.

(Figure 1-2).

From His Excellency, Judge J. H. P. Murray, Lieutenant-Governor of Papua, the Trustees have just received as a donation, a small bamboo box, or tube (Fig. 1), used for the purpose of sorcery.

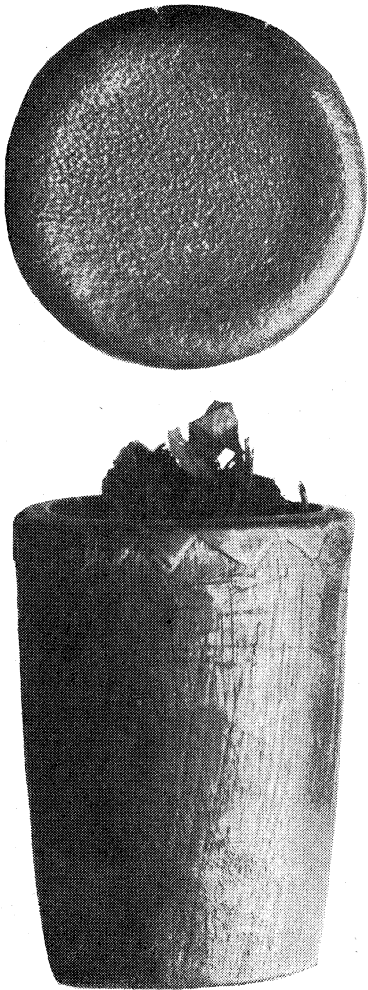


Fig. 2.

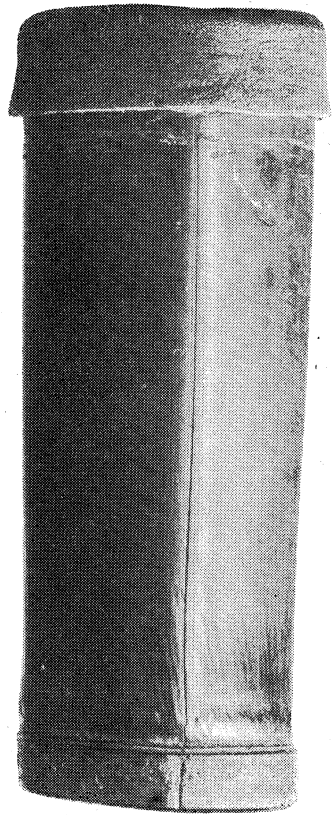


Fig. 1.