

## NOTES ON AUSTRALIAN CERAMBYCIDAE, VII.

By KEITH C. McKEOWN, F.R.Z.S.,  
Australian Museum, Sydney.

(Figures 1-6.)

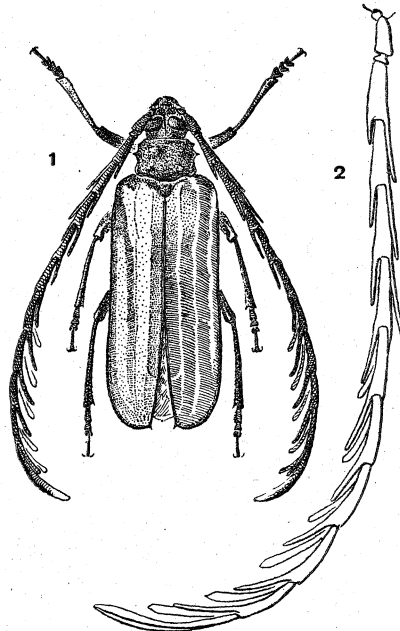
Gen. *Eboraphyllus* nov.

Characters as in *Enneaphyllus* Waterhouse, 1877, but differs in the spined elytral apices, and the antennary joints bearing two apical foliations in the male.

Genotype, *E. middletoni*, sp. nov.

*Eboraphyllus middletoni* sp. nov. (Figs. 1-2).

Male. Robust; light brown, thorax pitchy, legs and antennae chestnut-brown. *Head* relatively small, coarsely and confluent punctate; mandibles moderate, black, with sparse coarse punctures; palpi yellow; eyes large, approximate, coarsely granulate, black; antennary tubercles prominent, coarsely punctate basally, apically nitid. Antennae (Fig. 2) considerably longer than body. Each joint bears two apical expansions, becoming longer, more flattened and foliate on each successive segment except the terminal, the inner being the longer in each case; the apical joint terminates in an elongate, slightly thickened leaf-like expansion twice the length of the joint. Joint 1 short and stout, shorter than 3, 3-11 of equal length. First and second joints coarsely and sparsely punctate, the remainder very finely and confluent punctate (shagreened). *Prothorax* wider than long, narrower than elytra, coarsely and confluent punctate, clothed with sparse, erect, stramineous hair, laterally sinuate with a slender acute spine a little anterior to half-way; anterior angle produced into a slightly projecting, some-



Figures 1 and 2.