

Visitor Map



Low Sensory
Quiet, well lit areas with fewer people and low noise levels

Medium Sensory
Light areas with few people, some audio and visual noise

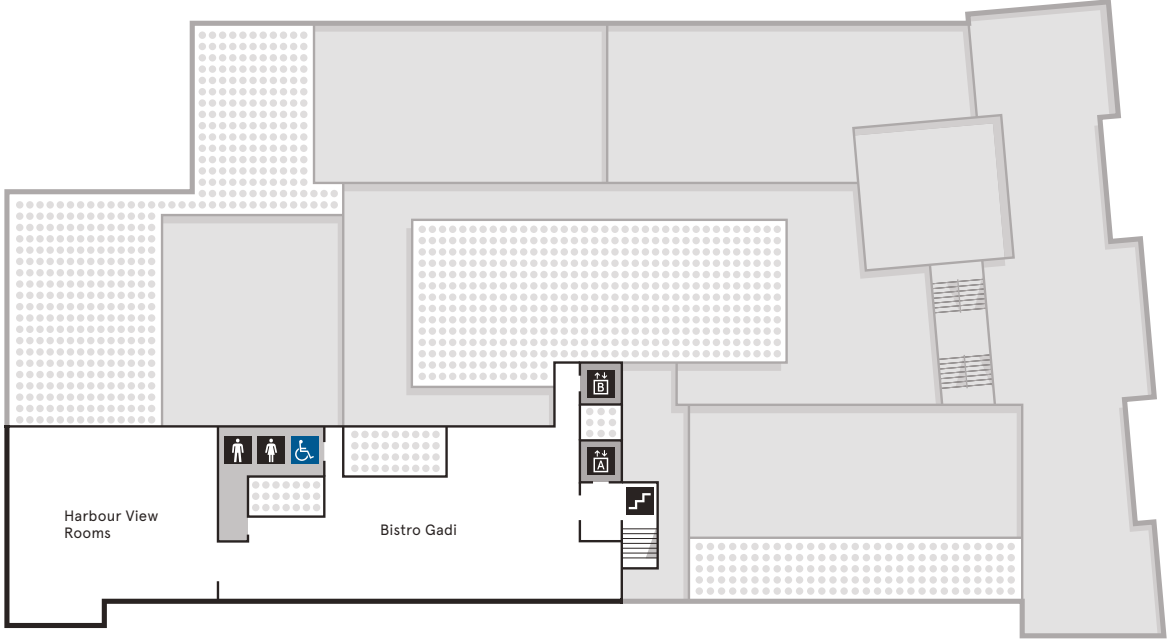
High Sensory
Busy areas, with a mix of multimedia, loud noises and/or low lighting

- Cloakroom
Level LG
- Admissions - Information & Tickets
Level G
- Museum Shop
Level G
- Food & Drink
Level 2 & 4
- Drinking Water Fountain
Level G, UG, 1, 2 & 3

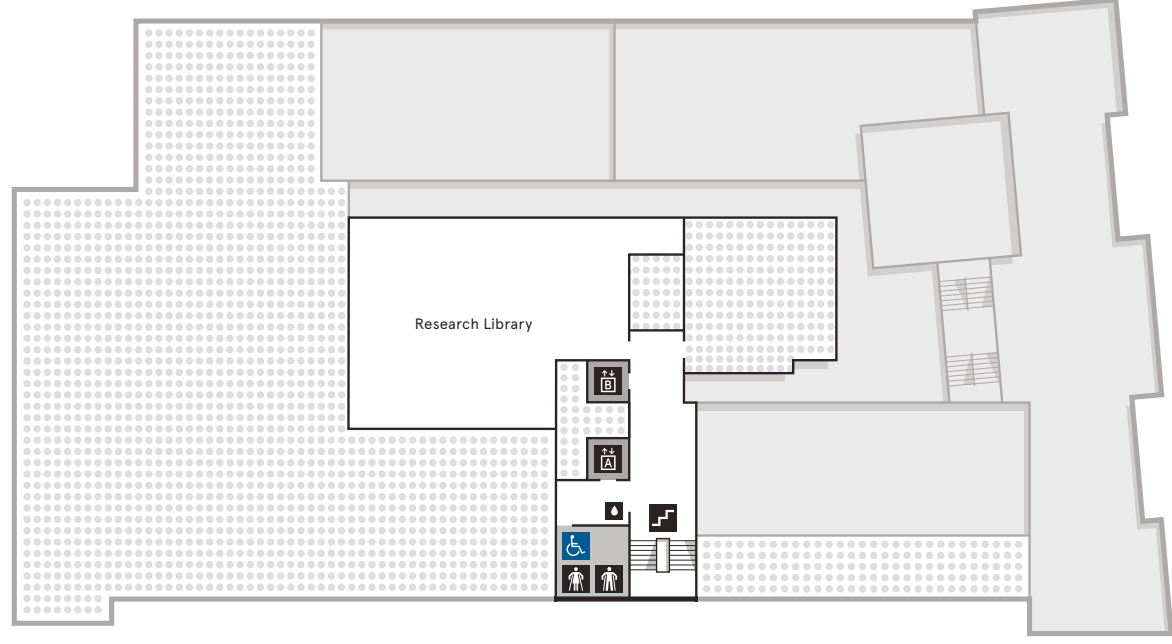
- Toilets
Levels LG, UG, 1, 2, 3 & 4
- Ambulant Toilets
Levels LG, 1 & 2
- Accessible Toilet
Levels LG, G, 1, 2, 3 & 4
- All Gender Toilet
Level LG
- Parents Room
Levels LG & 2
- Changing Places
Complex accessible facilities
Level 2

- Stairs
- Escalator
- Level access
- Lift A
Access all levels
- Lift B
Access UG, 1, 2 & 4
- Lift C
Access B & UG

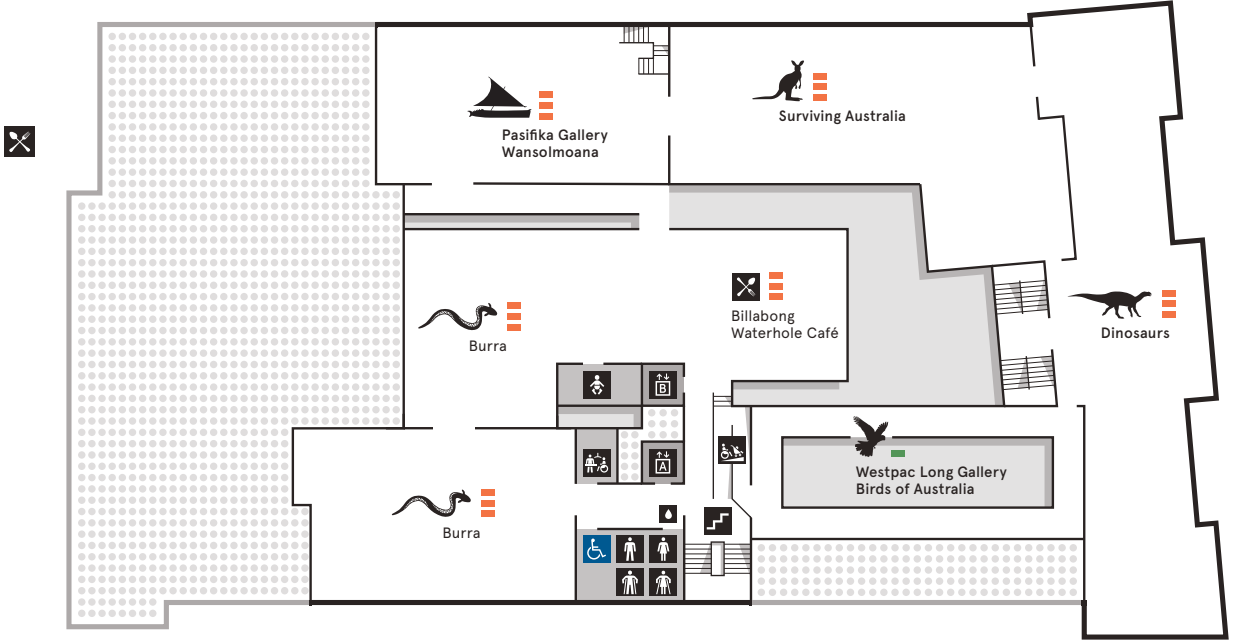
4



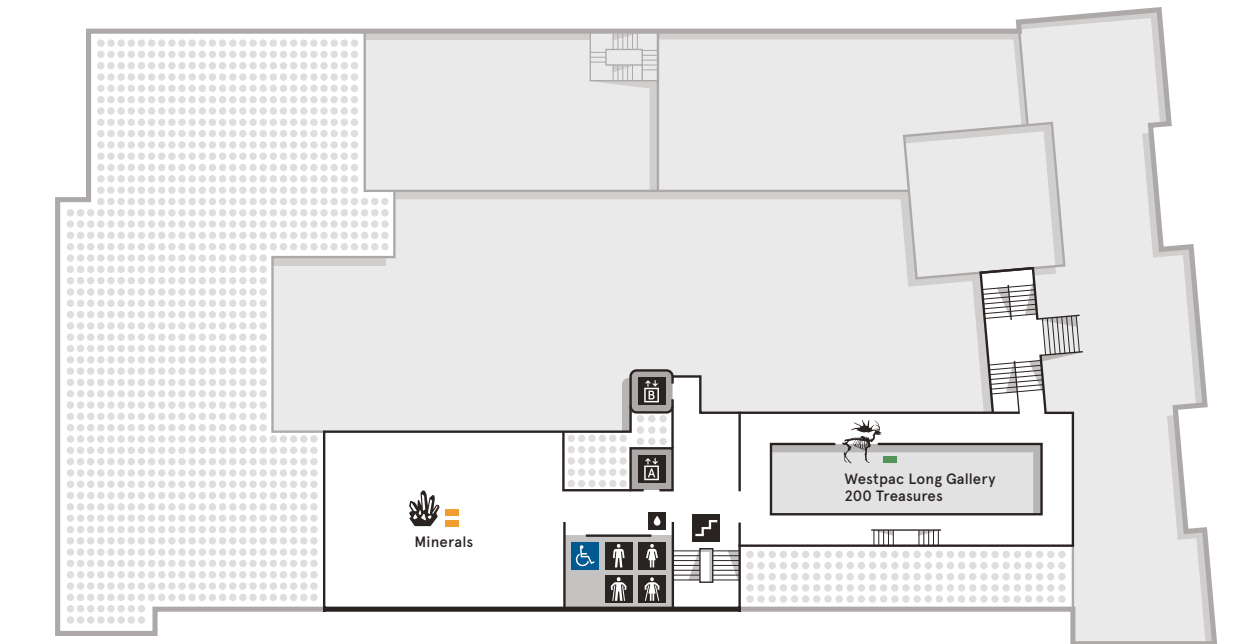
3



2

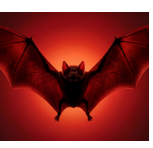


1

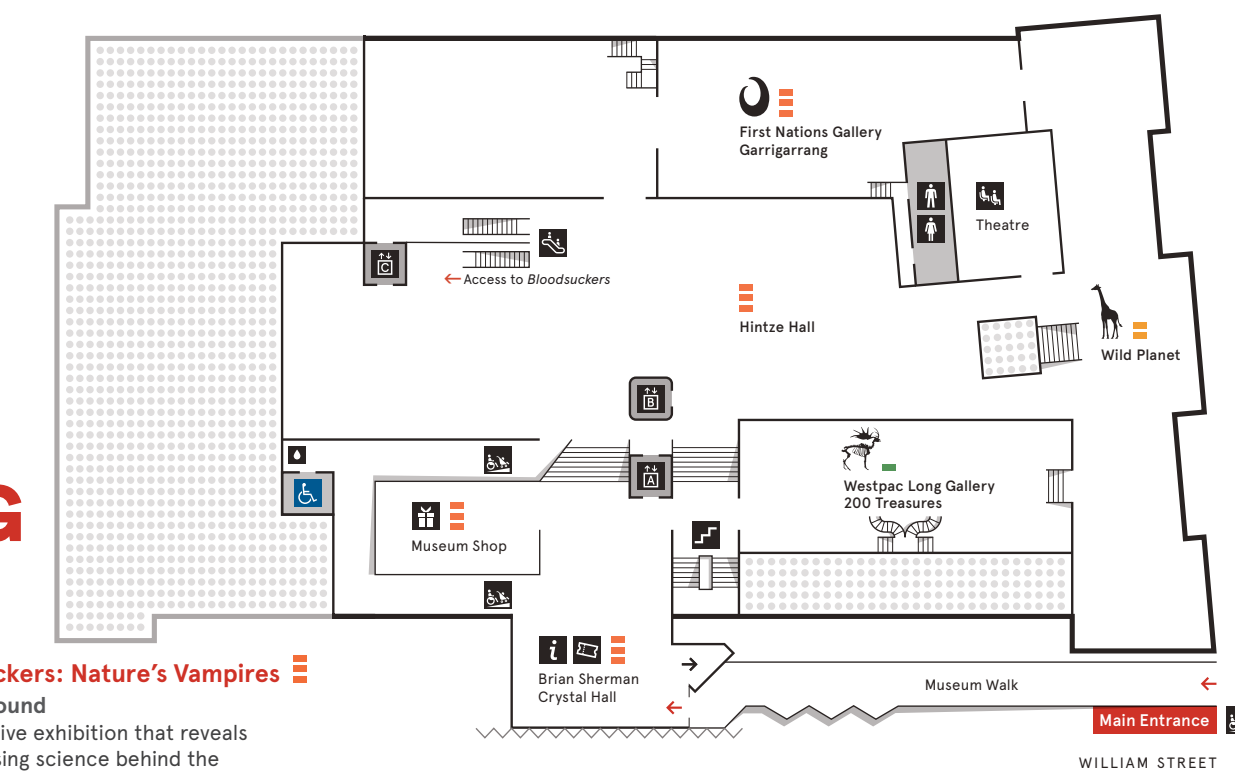


G/UG

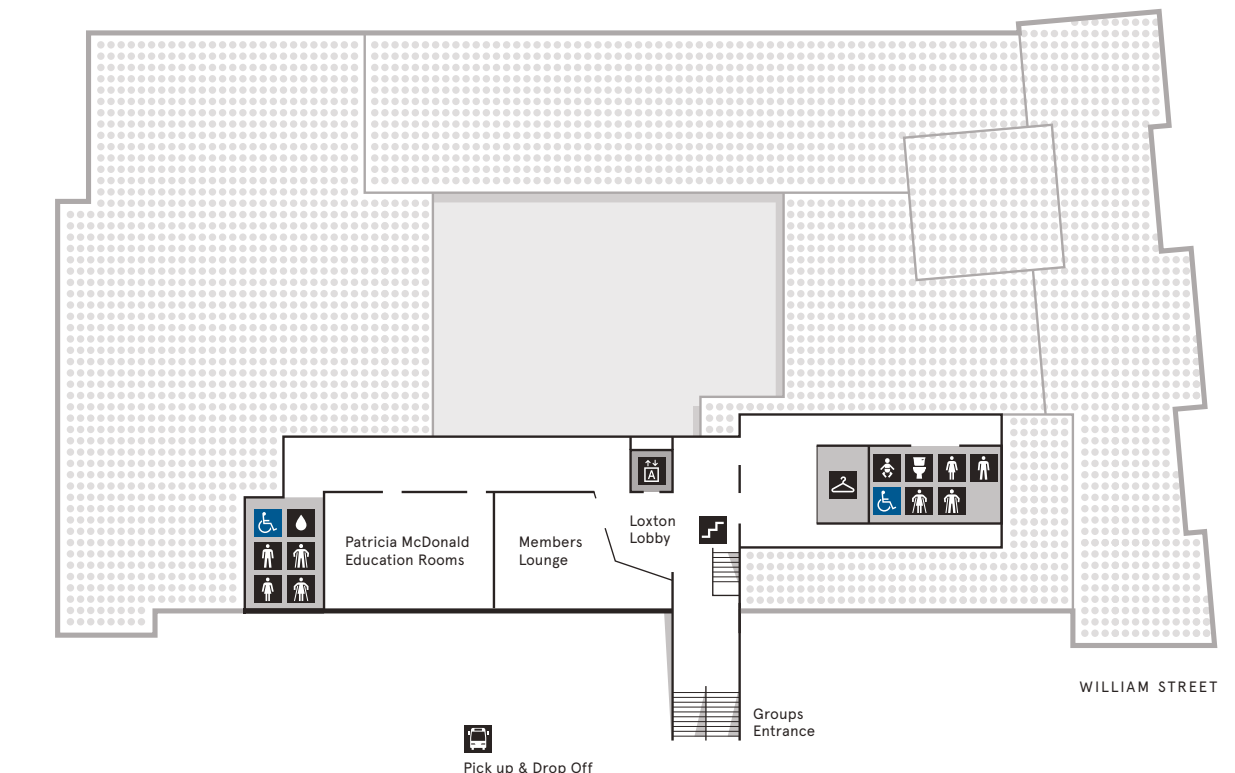
Main Entrance



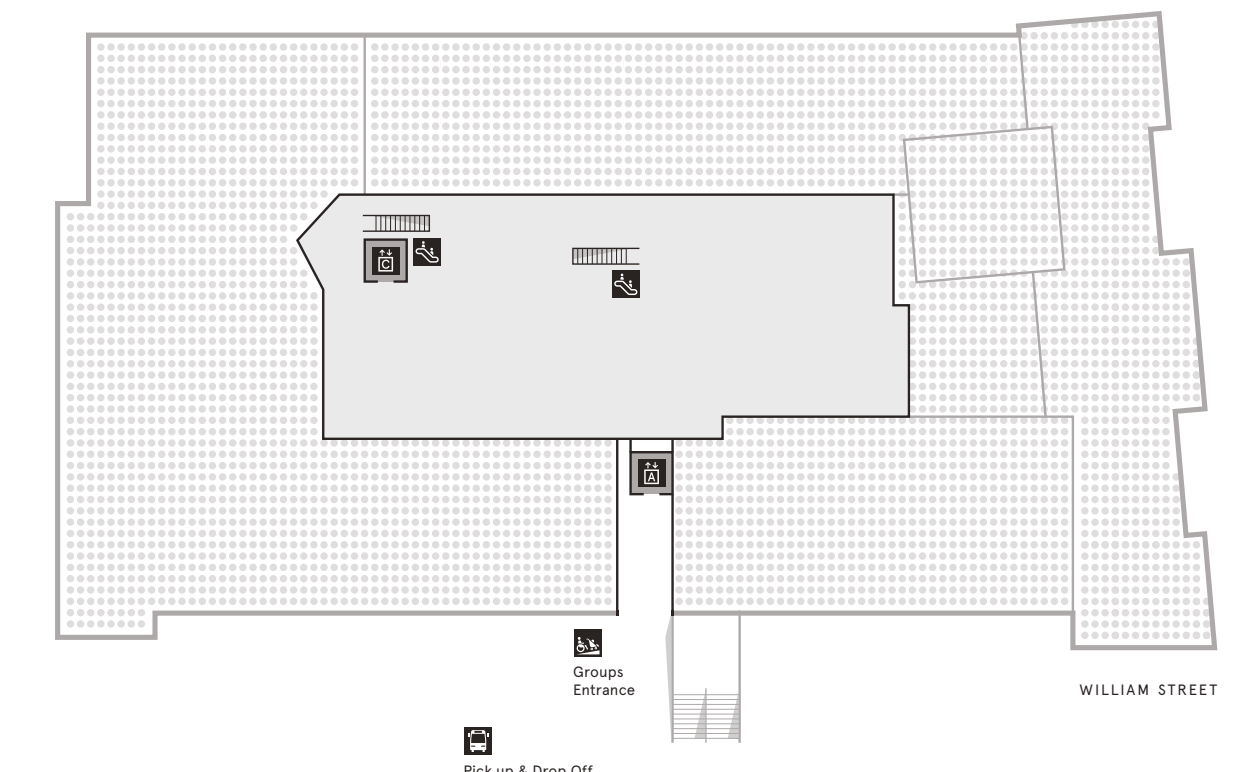
Bloodsuckers: Nature's Vampires
Upper Ground
An immersive exhibition that reveals the surprising science behind the world's most famous feeders



LG



B



COLLEGE STREET

COLLEGE STREET

COLLEGE STREET

WILLIAM STREET

WILLIAM STREET

WILLIAM STREET