

## Visitor Information

# Visitor Map

### **Australian Museum**

1 William Street, Sydney NSW 2010 Australia  
Main Entrance via corner William & College Streets

T 02 9320 6000

W [australian.museum](http://australian.museum)

Open daily 10am-5pm

 @australianmuseum

 @australianmuseum

 @austmus





Male / Female Toilets



Accessible Toilet



Information & Tickets



Escalator



Stairs



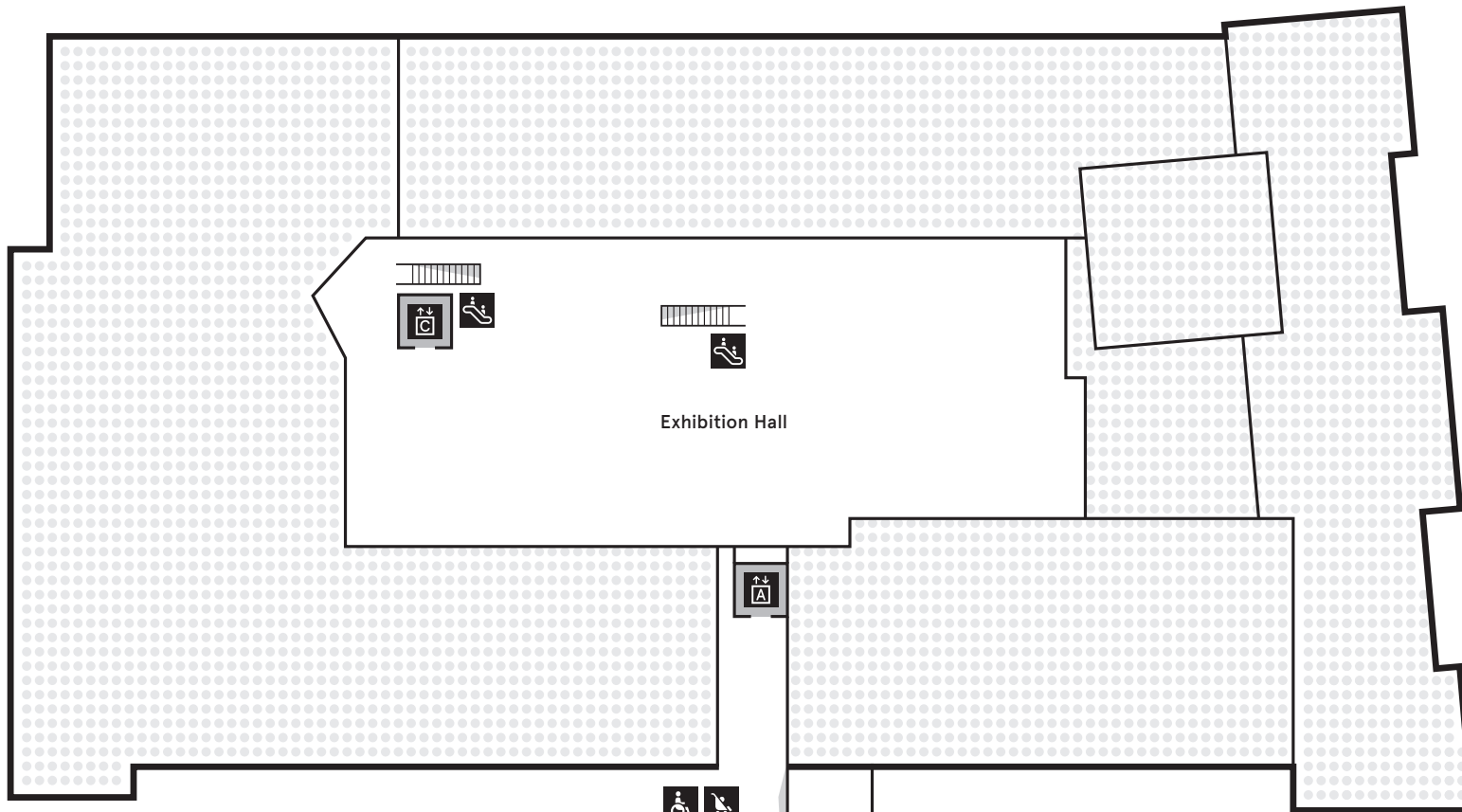
Lift A  
Access all levels






Lift B  
Access UG, 1, 2 & 4



Lift C  
Access B & UG



-  **Low Sensory**  
Quiet, well lit areas with fewer people and low noise levels
-  **Medium Sensory**  
Light areas with few people, some audio and visual noise
-  **High Sensory**  
Busy areas, with a mix of multimedia, loud noises and/or low lighting



Male / Female Toilets



Accessible Toilet



Information & Tickets



Escalator



Stairs



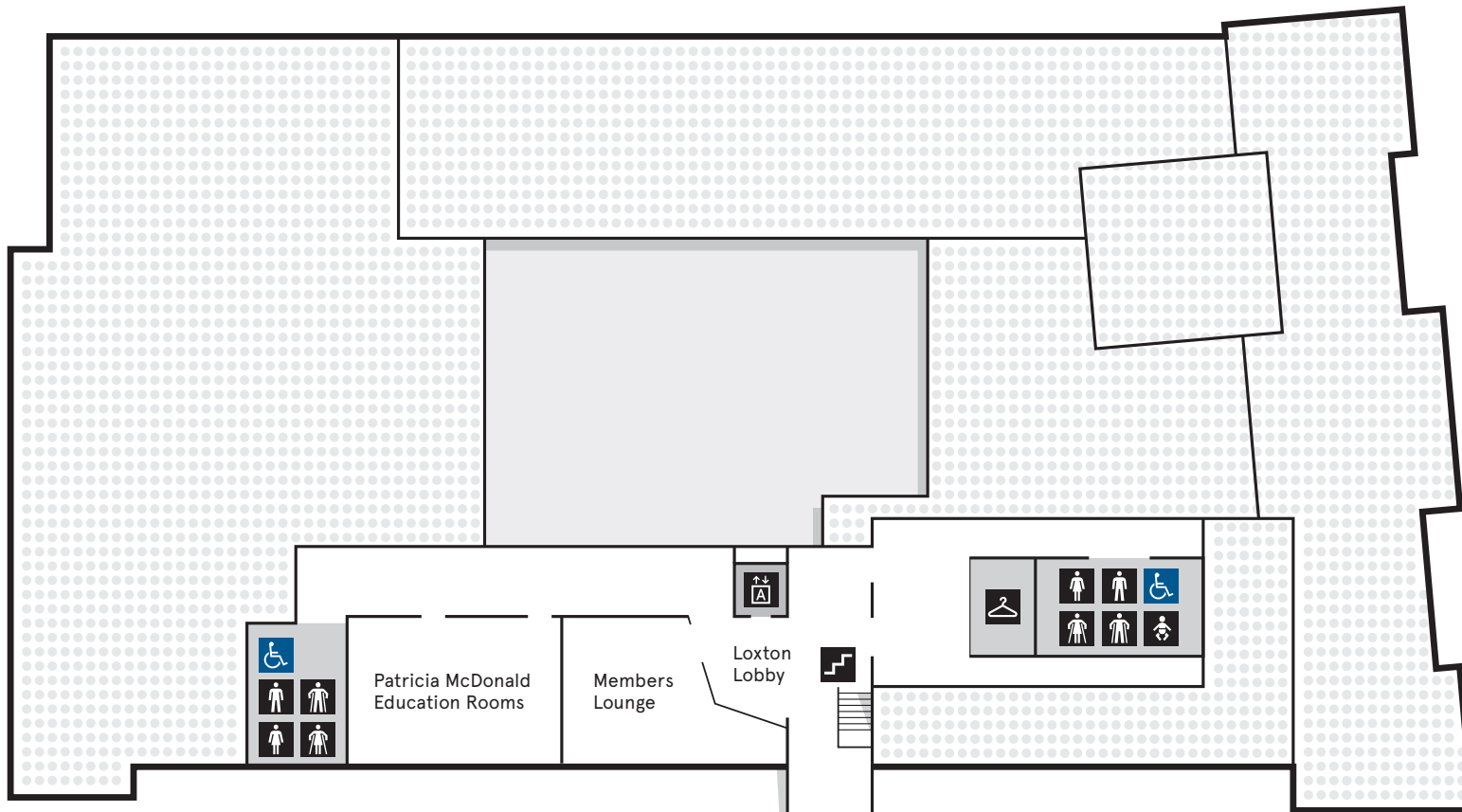
Lift A  
Access all levels



Lift B  
Access UG, 1, 2 & 4



Lift C  
Access B & UG



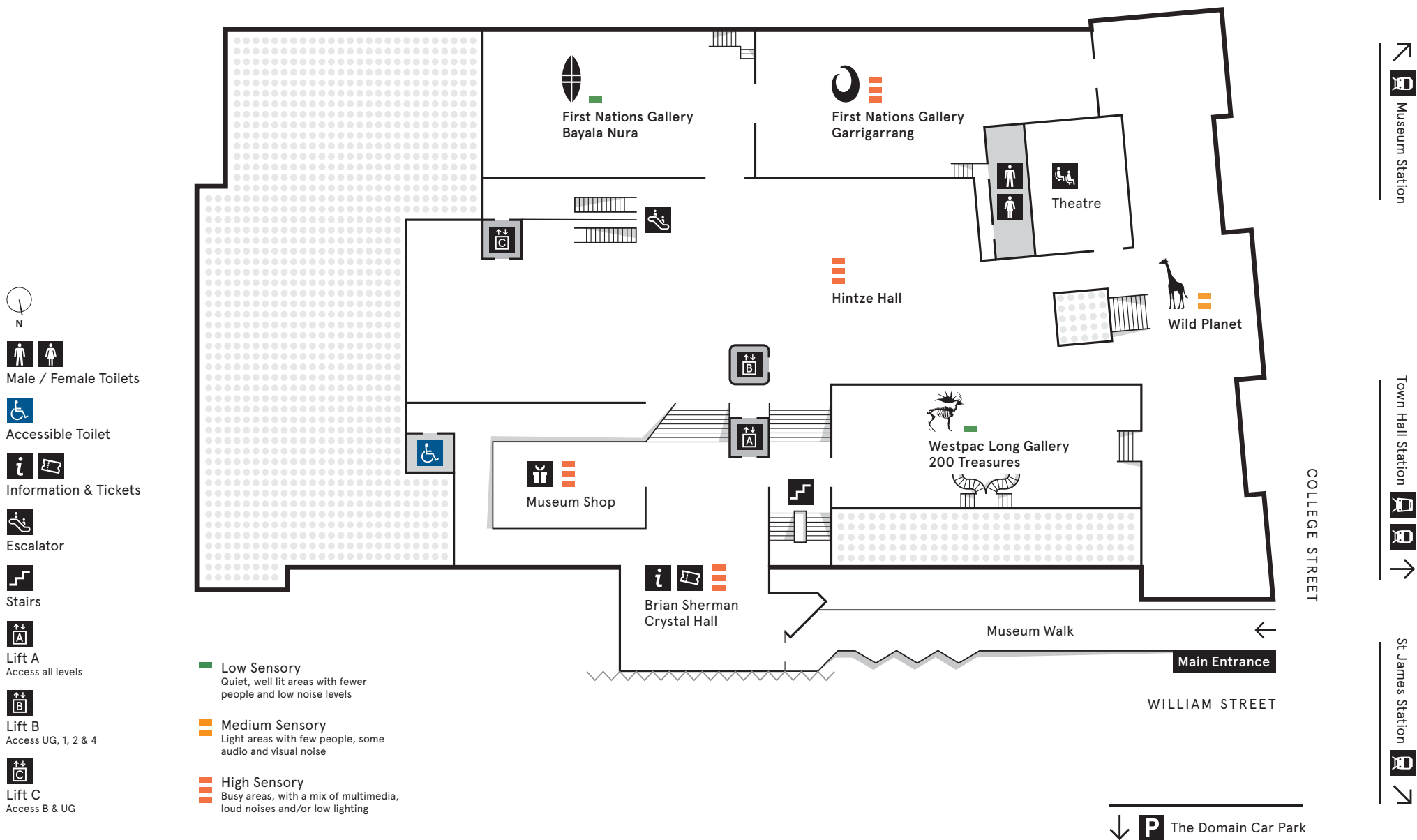
- **Low Sensory**  
Quiet, well lit areas with fewer people and low noise levels
- **Medium Sensory**  
Light areas with few people, some audio and visual noise
- **High Sensory**  
Busy areas, with a mix of multimedia, loud noises and/or low lighting



Pick up & Drop off

COLLEGE STREET

WILLIAM STREET





Male / Female Toilets



Accessible Toilet



Information & Tickets



Escalator



Stairs



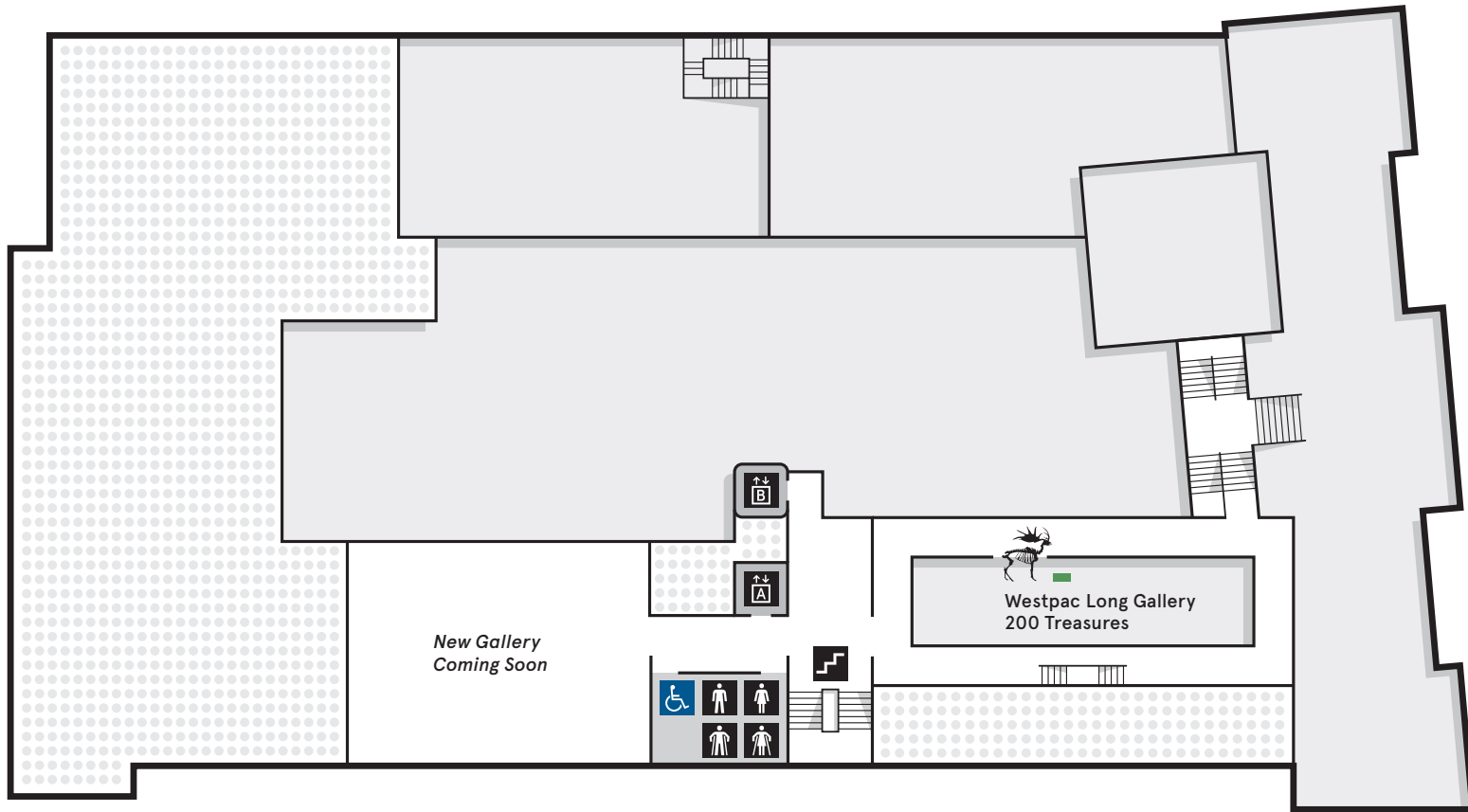
Lift A  
Access all levels



Lift B  
Access UG, 1, 2 & 4



Lift C  
Access B & UG



- **Low Sensory**  
Quiet, well lit areas with fewer people and low noise levels
- **Medium Sensory**  
Light areas with few people, some audio and visual noise
- **High Sensory**  
Busy areas, with a mix of multimedia, loud noises and/or low lighting



Male / Female Toilets



Accessible Toilet



Information & Tickets



Escalator



Stairs



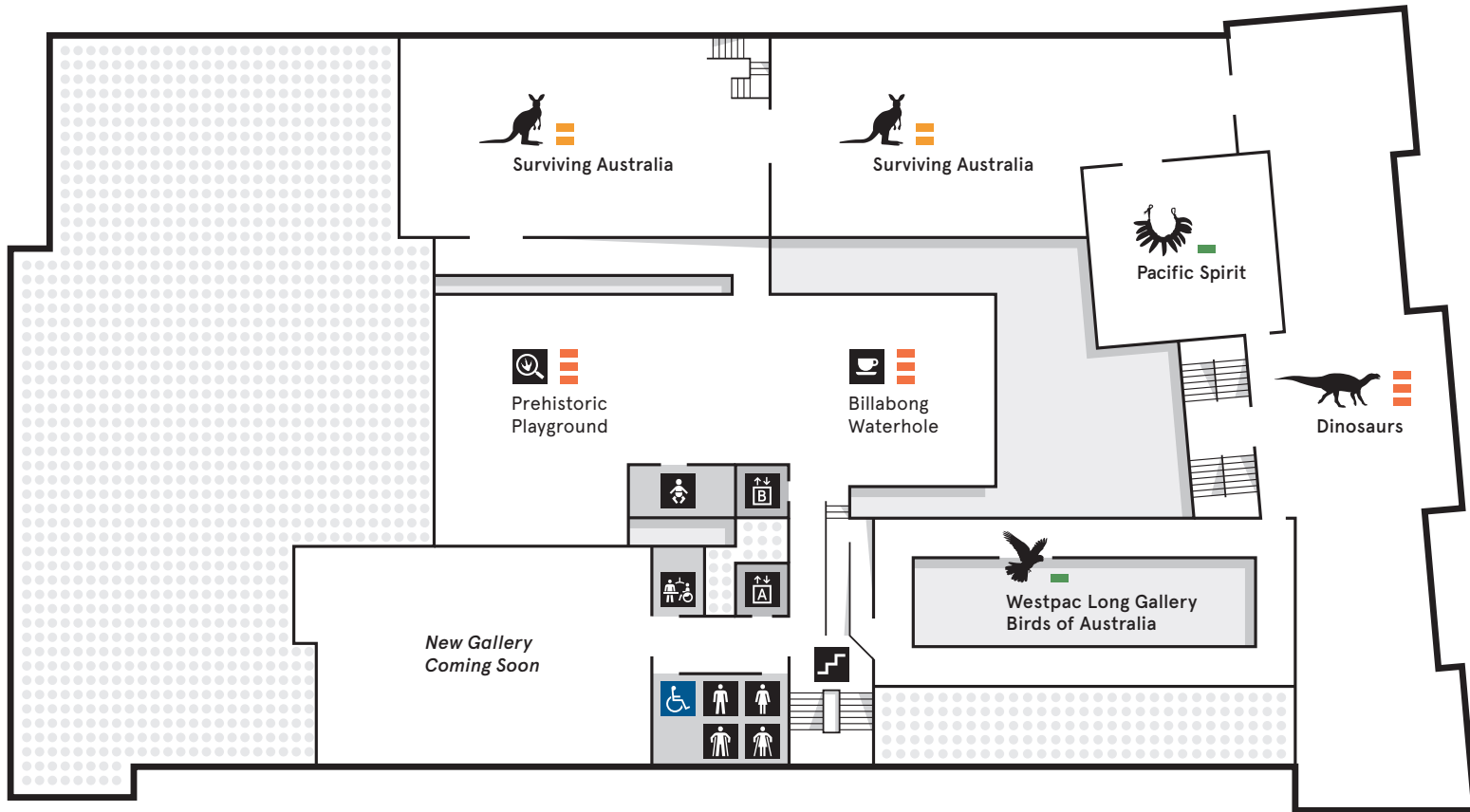
Lift A  
Access all levels



Lift B  
Access UG, 1, 2 & 4



Lift C  
Access B & UG



- **Low Sensory**  
Quiet, well lit areas with fewer people and low noise levels
- **Medium Sensory**  
Light areas with few people, some audio and visual noise
- **High Sensory**  
Busy areas, with a mix of multimedia, loud noises and/or low lighting



Male / Female Toilets



Accessible Toilet



Information & Tickets



Escalator



Stairs



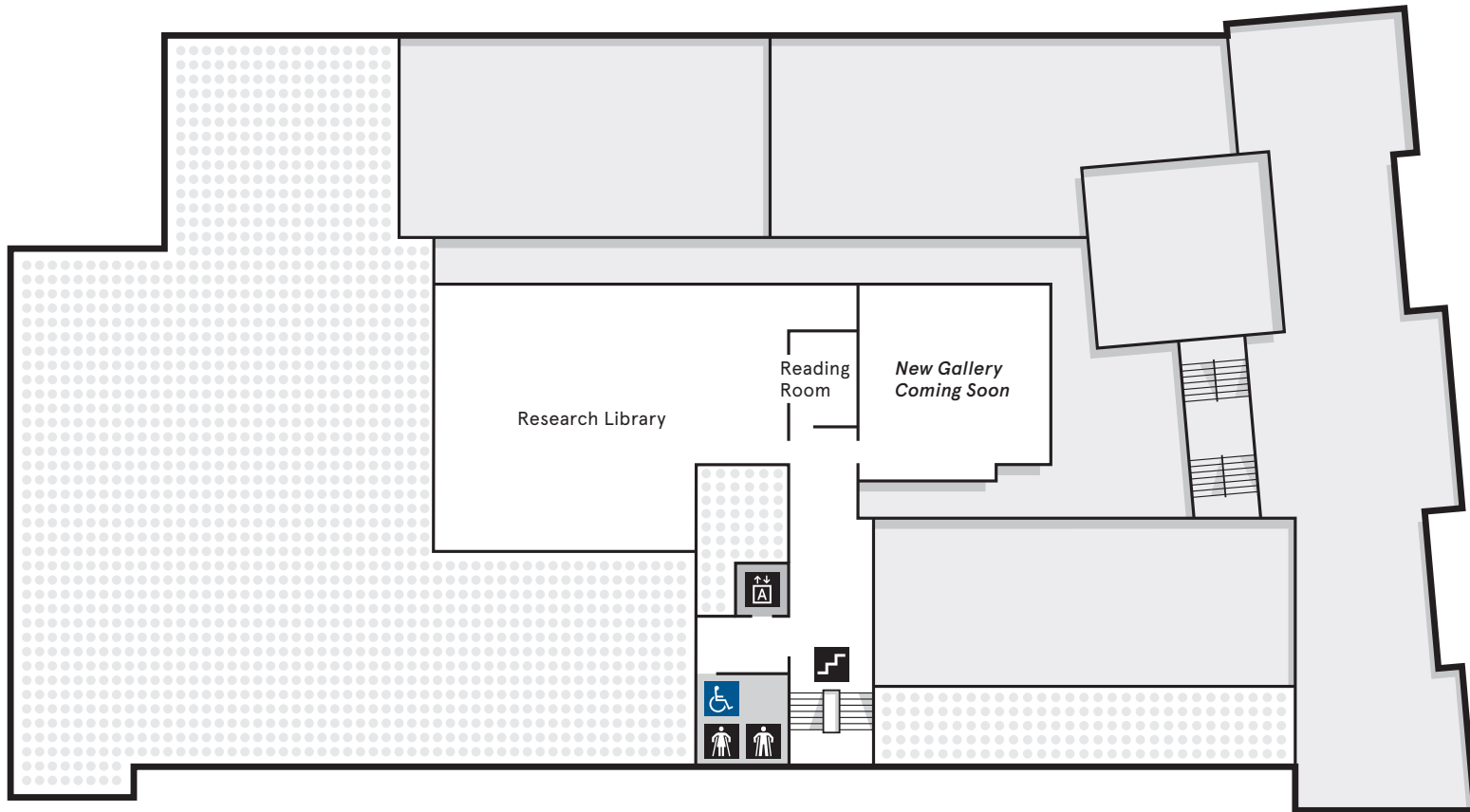
Lift A  
Access all levels



Lift B  
Access UG, 1, 2 & 4



Lift C  
Access B & UG



- **Low Sensory**  
Quiet, well lit areas with fewer people and low noise levels
- **Medium Sensory**  
Light areas with few people, some audio and visual noise
- **High Sensory**  
Busy areas, with a mix of multimedia, loud noises and/or low lighting



Male / Female Toilets



Accessible Toilet



Information & Tickets



Escalator



Stairs



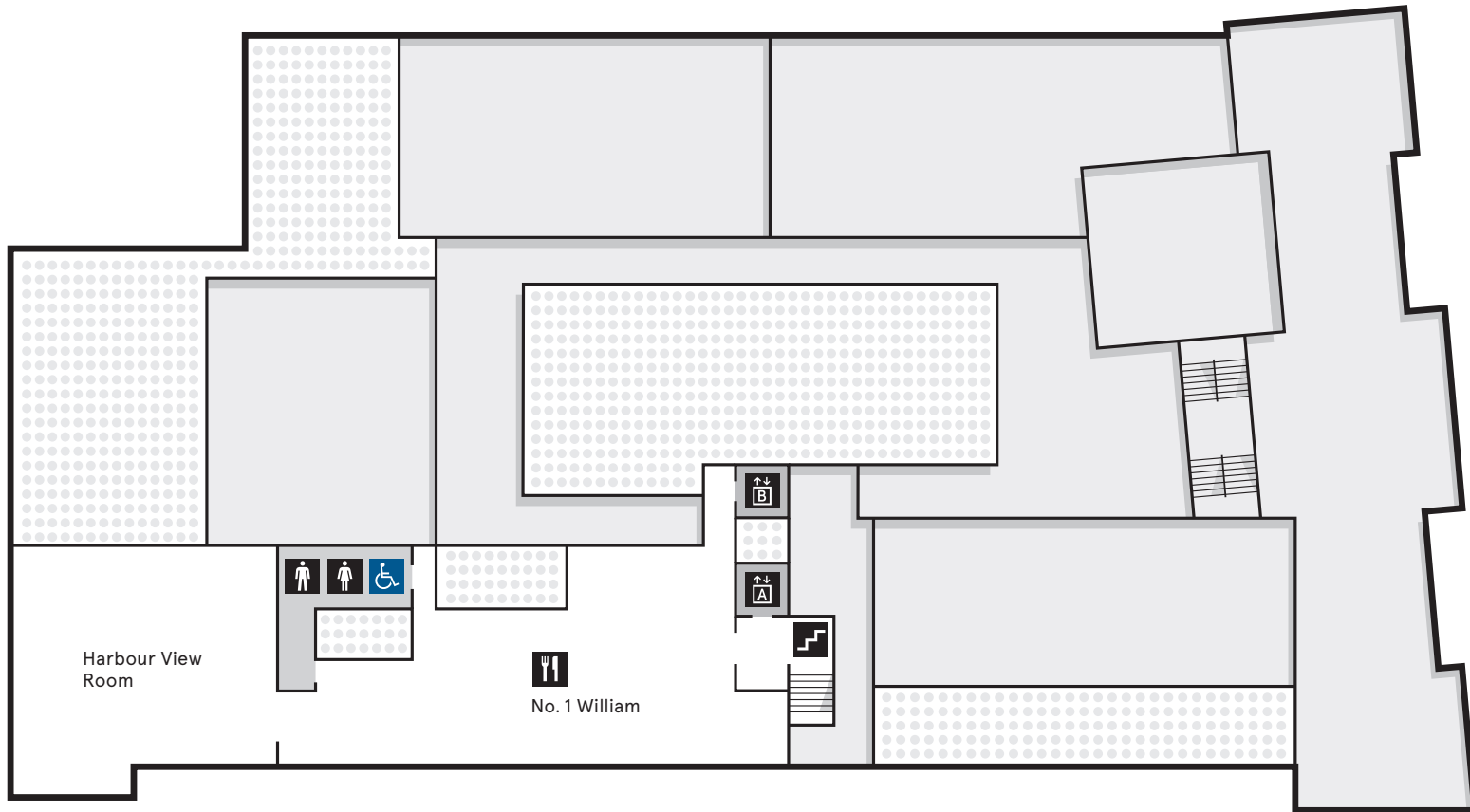
Lift A  
Access all levels



Lift B  
Access UG, 1, 2 & 4



Lift C  
Access B & UG



- **Low Sensory**  
Quiet, well lit areas with fewer people and low noise levels
- **Medium Sensory**  
Light areas with few people, some audio and visual noise
- **High Sensory**  
Busy areas, with a mix of multimedia, loud noises and/or low lighting